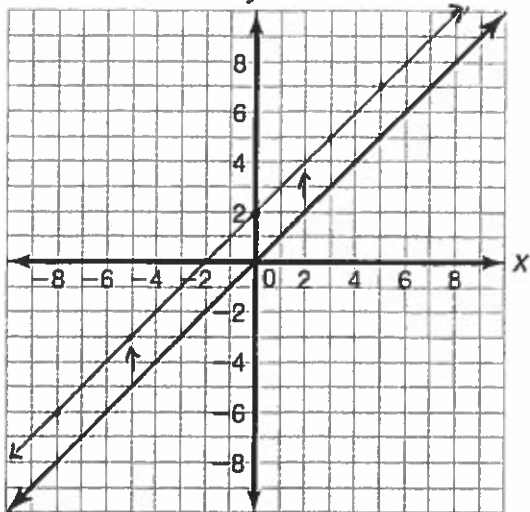


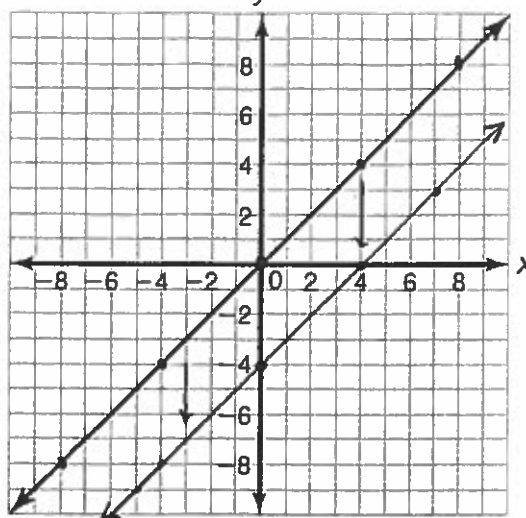
5.3 HW (Part 1 - Vertical Translations)

Each coordinate plane shows the graph of $f(x)$. Sketch the graph of $g(x)$.

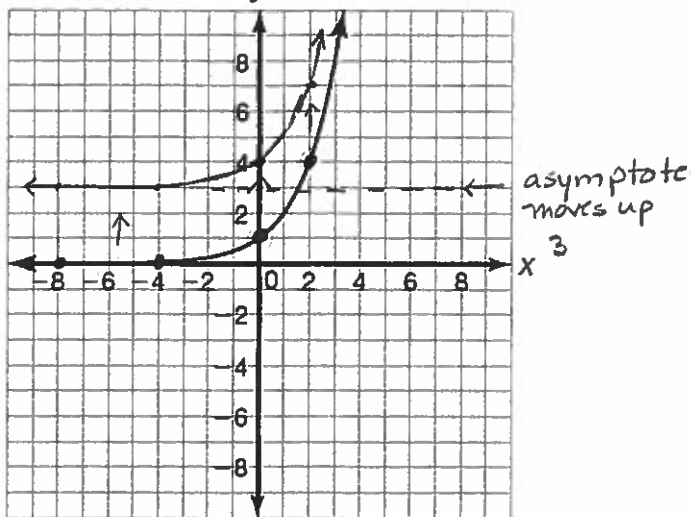
1. $g(x) = f(x) + 2$ *y UP 2*



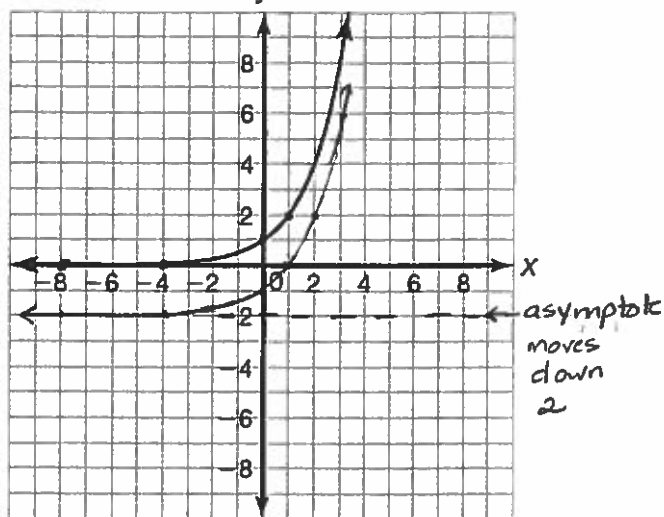
2. $g(x) = f(x) - 4$ *y DOWN 4*



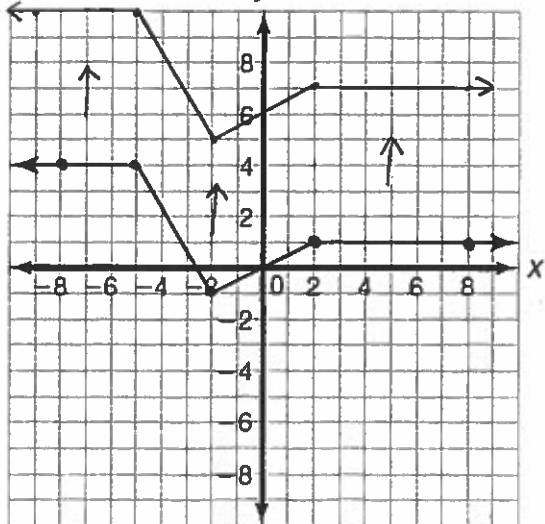
3. $g(x) = f(x) + 3$ *y UP 3*



4. $g(x) = f(x) - 2$ *y DOWN 2*



5. $g(x) = f(x) + 6$ *y UP 6*



6. $g(x) = f(x) - 5$ *y DOWN 5*

