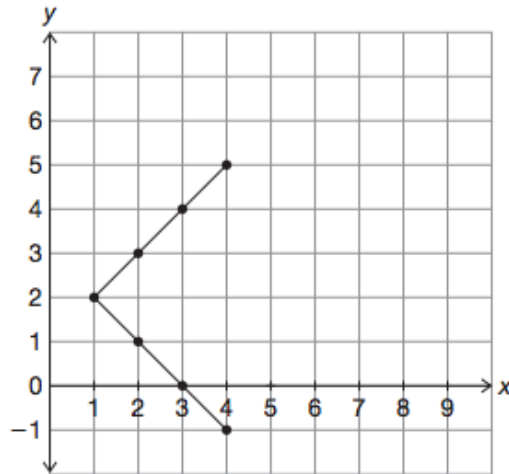


Warm Up - Day 2

Warm Up

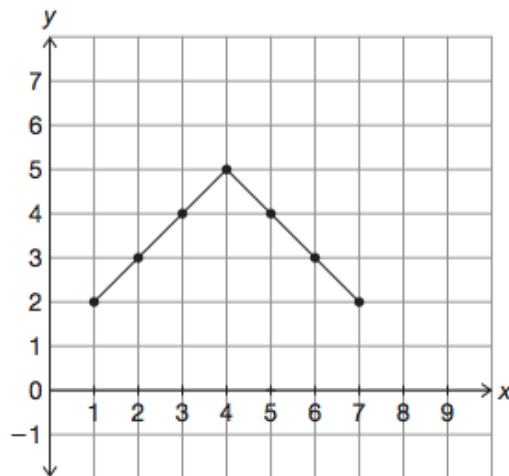
1. Use the points on each graph to complete the corresponding table of values.

Graph A



x	y

Graph B



x	y

- Which graph has a different x -value for each y -value?
- Which graph has the same x -values for different y -values?
- If the equation $x = 2$ were drawn on both graphs, how many points on each graph would intersect this line?